

TURNSTILE

N2

VERSIONS:

GA2-N2

ZA2-N2  
(MOTOR)

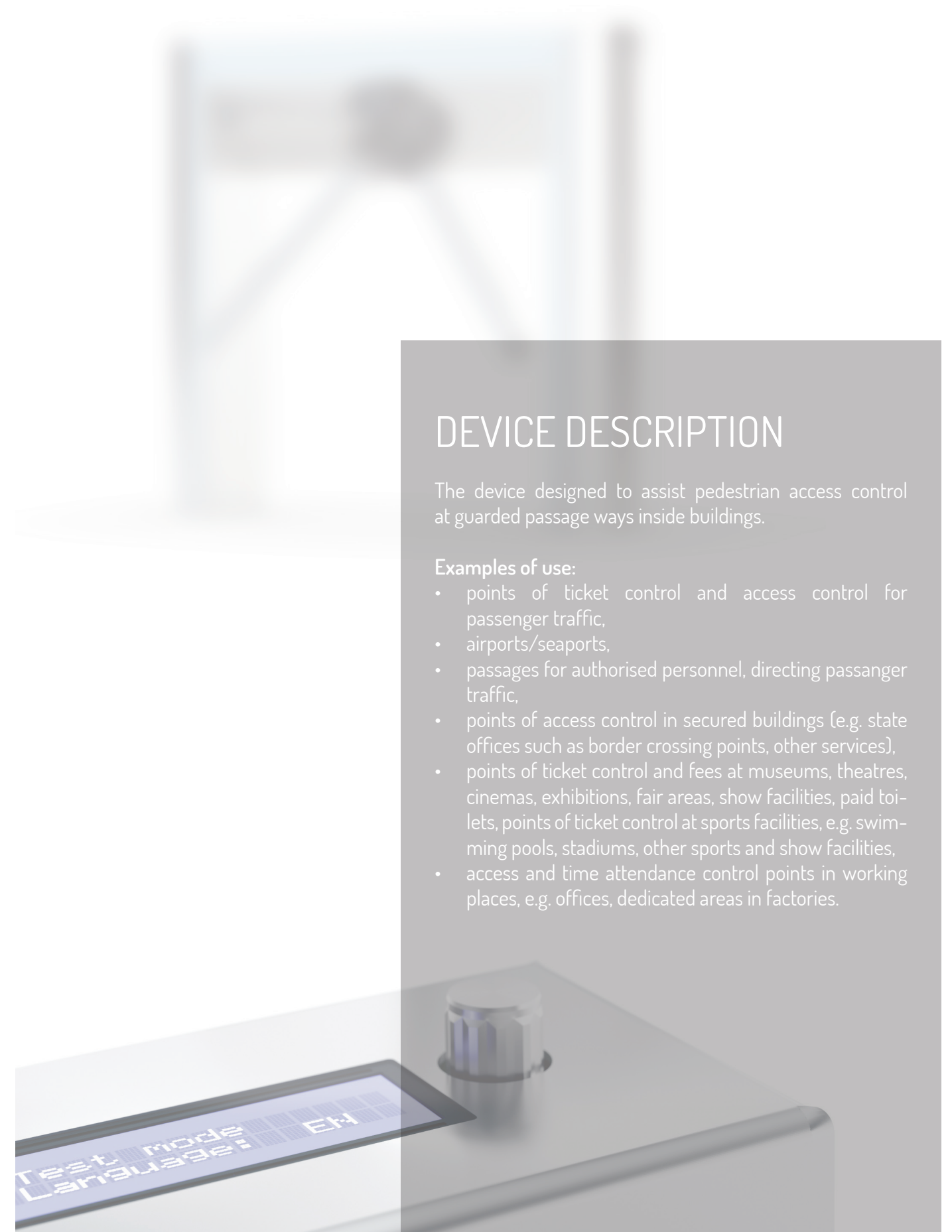


 **GASTOP**



Proven Solutions  
New Version

## Quick and Easy Setup



### DEVICE DESCRIPTION

The device designed to assist pedestrian access control at guarded passage ways inside buildings.

#### Examples of use:

- points of ticket control and access control for passenger traffic,
- airports/seaports,
- passages for authorised personnel, directing passenger traffic,
- points of access control in secured buildings (e.g. state offices such as border crossing points, other services),
- points of ticket control and fees at museums, theatres, cinemas, exhibitions, fair areas, show facilities, paid toilets, points of ticket control at sports facilities, e.g. swimming pools, stadiums, other sports and show facilities,
- access and time attendance control points in working places, e.g. offices, dedicated areas in factories.





Safety has style too



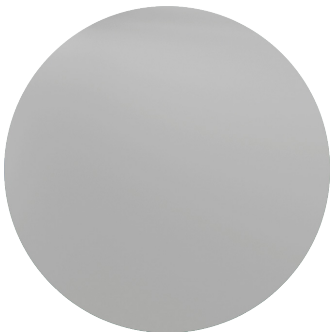
DEVICE DESCRIPTION



FINISH OPTIONS



■ Stainless steel - INOX AISI 304



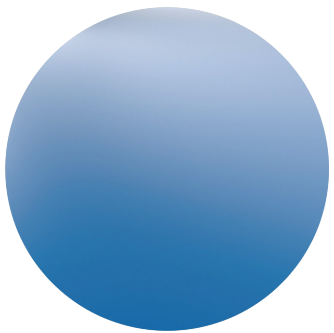
□ RAL 9006



□ RAL 7016



□ RAL 9003



□ RAL 5010



□ RAL 6002

- Standard finish
- Non-standard colour/non-standard finishing



# DEVICE CONTROLLER

## IMPORTANT FEATURES


## MAIN INPUTS / OUTPUTS


QUEUE LENGTH CONFIGURATION (SIGNAL MEMORY)	ENTRY	
DISPLAYING OPERATION PARAMETERS / CONFIGURATION OF WORKING MODES	CARD READER	BUTTON
	EXIT	
LANGUAGE SELECTION	CARD READER	BUTTON
	INFORMATION ON THE EXECUTION OF THE TRANSITION CYCLE	
CONFIGURATION OF UNLOCKING TIME / FEEDBACK CONFIGURATION	FEEDBACK (ENTRY)	FEEDBACK (EXIT)
	INPUT (LOCK)	
TEST MODE / CALIBRATION	TO LOCK TRANSITION SECTION E.G. WITH A METAL DETECTOR OR BMS	
	INPUT (FIRE PROTECTION)	
	TO UNLOCK TRANSITION SECTION E.G. WITH A FIRE PROTECTION SYSTEM	


NEW!


MODEL ZA2


VERSION WITH MOTOR


**CONTROL: MAGTRONIC**  
The mechanism is adapted to work with the MACTRONIC electronic system enabling, among others, settings of operating modes, diagnostics, control with external systems.


**MODES OF OPERATION**  
The device enables operation in various modes, e.g. pedestrian traffic control for both traffic directions or pedestrian traffic control for any selected traffic direction.


**EASY CONFIGURATION**  
Operation modes and functions can be easily configured via the control panel with display and manipulator.


**LED PICTOGRAMS**  
Visual signaling (diode pictograms) inform about the directions of possible traffic in the crossing section that are turned on and off.

**PRECISE ROTOR POSITION MEASUREMENT SYSTEM**  
The device is equipped with an electronic rotor position measurement system, which, using an encoder, allows you to control the operation of the locking system and smooth rotor movement.

**SOUND SIGNAL**  
The device is equipped with an acoustic signaling device activated, among others, by when forcing the rotor arm.


**ASSISTING MOVEMENT OF ROTOR**  
The mechanism of the device is equipped with an electromechanical system supporting the rotation of the arms (motor).


**LOCKING SYSTEM**  
The device has a system that unlocks the device in the event of a power failure.


**ARM DROP FUNCTION (ADDITIONAL OPTION)**  
Automatic arm drop function in case of power failure (this function is available in the device model with the arm drop module).


**MODEL GA2**


**CONTROL: MAGTRONIC**  
The mechanism is adapted to work with the MACTRONIC electronic system enabling, among others, settings of operating modes, diagnostics, control with external systems.


**MODES OF OPERATION**  
The device enables operation in various modes, e.g. pedestrian traffic control for both traffic directions or pedestrian traffic control for any selected traffic direction.


**EASY CONFIGURATION**  
Operation modes and functions can be easily configured via the control panel with display and manipulator.

**LED PICTOGRAMS**  
Visual signaling (diode pictograms) inform about the directions of possible traffic in the crossing section that are turned on and off.

**MECHANICAL ROTOR POSITIONING**  
The device has a mechanical system for positioning the rotor arms.

**ASSISTING MOVEMENT OF ROTOR**  
The mechanism of the device is equipped with a mechanical-pneumatic system supporting the rotation of the arms.

**LOCKING SYSTEM**  
The device has a system that unlocks the device in the event of a power failure.

**ARM DROP FUNCTION (ADDITIONAL OPTION)**  
Automatic arm drop function in case of power failure (this function is available in the device model with the arm drop module).

# DEVICE MODELS

WITH MOTOR	MODEL	MECHANISM	MECHANISM	ARM DROP"DA"	COVER WITH HOLES FOR THE READER "R"
		ZA2	GA2		
	ZA2-N2-INOX	•			
	ZA2-N2-RAL	•			
	ZA2-N2-DA-INOX	•		•	
	ZA2-N2-DA-RAL	•		•	
	ZA2-N2-R-INOX	•			•
	ZA2-N2-R-RAL	•			•
	ZA2-N2-DA-R-INOX	•		•	•
	ZA2-N2-DA-R-RAL	•		•	•
	GA2-N2-INOX		•		
	GA2-N2-RAL		•		
	GA2-N2-DA-INOX		•	•	
	GA2-N2-DA-RAL		•	•	
	GA2-N2-R-INOX		•		•
	GA2-N2-R-RAL		•		•
	GA2-N2-DA-R-INOX		•	•	•
	GA2-N2-DA-R-RAL		•	•	•

# PARAMETERS

Power supply voltage:	~24 V AC	
Peak current:	70 VA	
Minimum power consumption:	3 A	
Control signal:	max. 1 sec	
Feedback signal:	0V	
Operating temperature:	-25° to +50° C [-13° to 122°F]	
Storage temperature:	-30° to +60° C [-22° to 140°F]	
Realive humidity:	10-80%	
Operating environment:	inside/outside of buildings*	
IP protection rate:	IP 40	
Net weight: ~ [kg/lbs]:	GA2	ZA2
	~60 / ~132	~49 / ~108

\* - under the roof

# ADDITIONAL OPTIONS

POSTS \*

UP-1



SCM1



SW-1-ARM



CONTROL PANELS \*

P1



P2



PLATFORMS \*

PSN-1



PSN-2

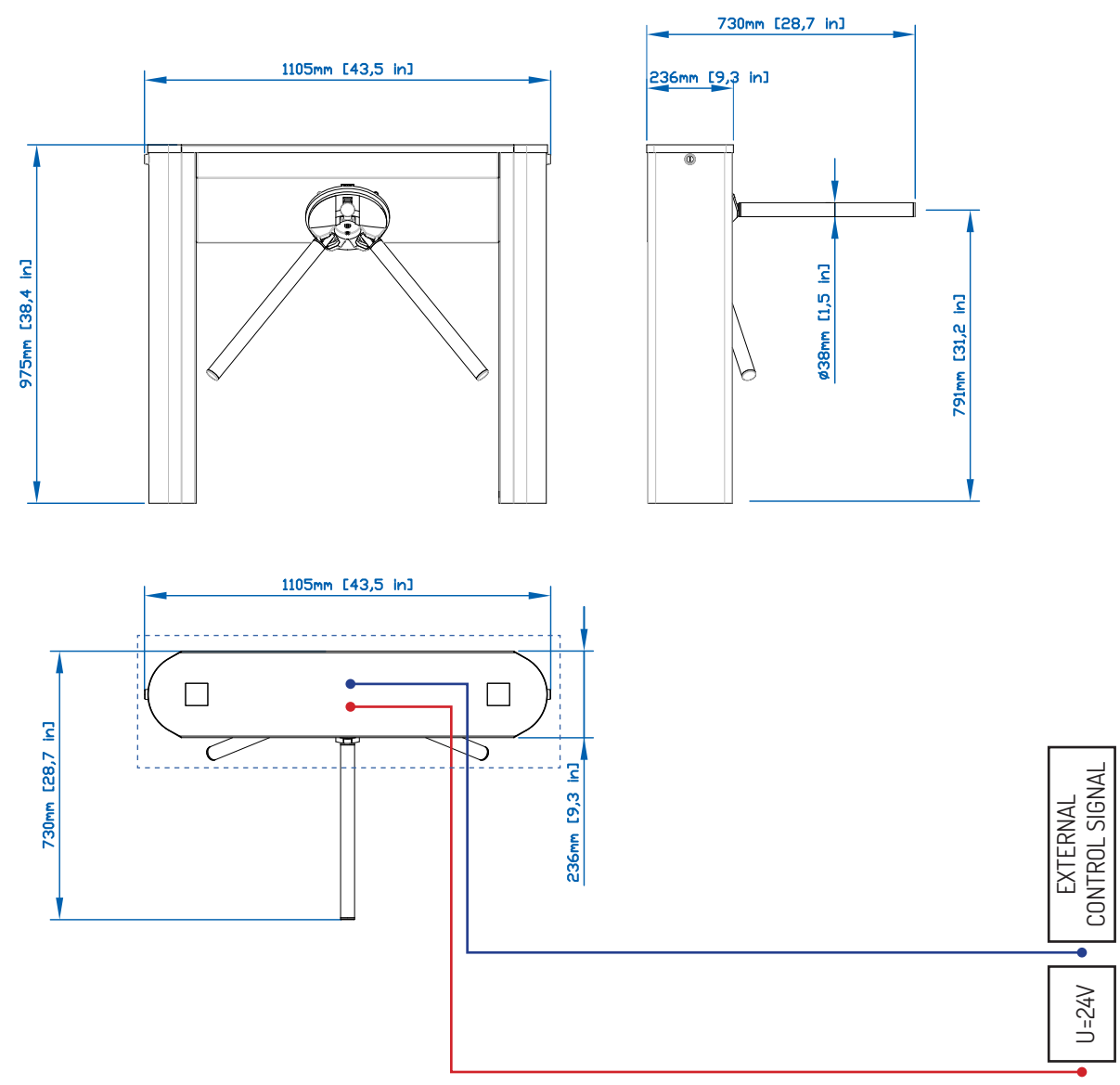


POWER SUPPLY \*



\* Optional equipment not included included in the equipment of the device.

# DIMENSIONS



- KEY:
- External control signal - S/UTP cable
  - 24 V supply - ØMY wire 3x1.5mm
  - Foundation

All information given herein is valid at time of publication. GASTOP reserves the right to introduce changes to this offer, concerning both models as well as their construction and equipment. This document does not constitute an offer as understood by law and is published solely for the purpose of information. Optional equipment presented in this brochure may not be available. Product photos and visualizations presented herein may not accurately show technologies in use, properties of materials or colors. Please refer to an authorized distributor or directly to the device manufacturer for detailed information on the above mentioned parameters.

All rights reserved Gastop Production Sp. z o.o.

Przedstawione informacje są aktualne w chwili ukazania się niniejszej publikacji. GASTOP zastrzega sobie prawo do zmian w ofercie w zakresie oferowanych modeli jak i ich budowy oraz wyposażenia. Niniejszy dokument nie stanowi oferty w rozumieniu prawa i publikowany jest jedynie dla celów informacyjnych. Przedstawione w tym katalogu warianty wyposażenia mogą nie być dostępne. Przedstawione wizualizacje i zdjęcia produktów mogą nie odzwierciedlać dokładnie przyjętych rozwiązań technicznych, właściwości materiałów, kolorystyki. W celu sprecyzowania w/w parametrów należy zwrócić się o informacje do autoryzowanego dystrybutora lub bezpośrednio do producenta urządzeń.

Wszystkie prawa zastrzeżone Gastop Production Sp. z o.o.

Notatki:



EU: [GASTOPGROUP.COM](http://GASTOPGROUP.COM)  
USA: [GASTOP.US](http://GASTOP.US)

Distributor