

TURNSTILES  
BR2-F2





Top Reliability

## Quick and Easy Setup



### BR2-F2

Facilitates access control in secure areas indoors.

#### Typical usage:

- passenger traffic ticket and access control points,
- airports/seaports,
- authorized personnel entry points, passenger flow direction,
- access control points in secure buildings (e.g. federal facilities, including border crossings, departments, other agencies and branches,
- ticket control and fee collection points at museums, theaters, exhibitions, fairs, arenas, pay toilets, ticket control points in sport facilities, e.g. swimming pools, stadiums, other multi-purpose arenas,
- access control and TNT systems in the workplace, e.g. offices, special areas in factories.





Timeless Design and Top Reliability



# Perfect Form

Art of Creation.



## DEVICE DESCRIPTION



## FINISH OPTIONS



☒ Stainless steel - INOX AISI 304



☐ RAL 9006



☐ RAL 9005



☐ RAL 5010



☐ RAL 6002



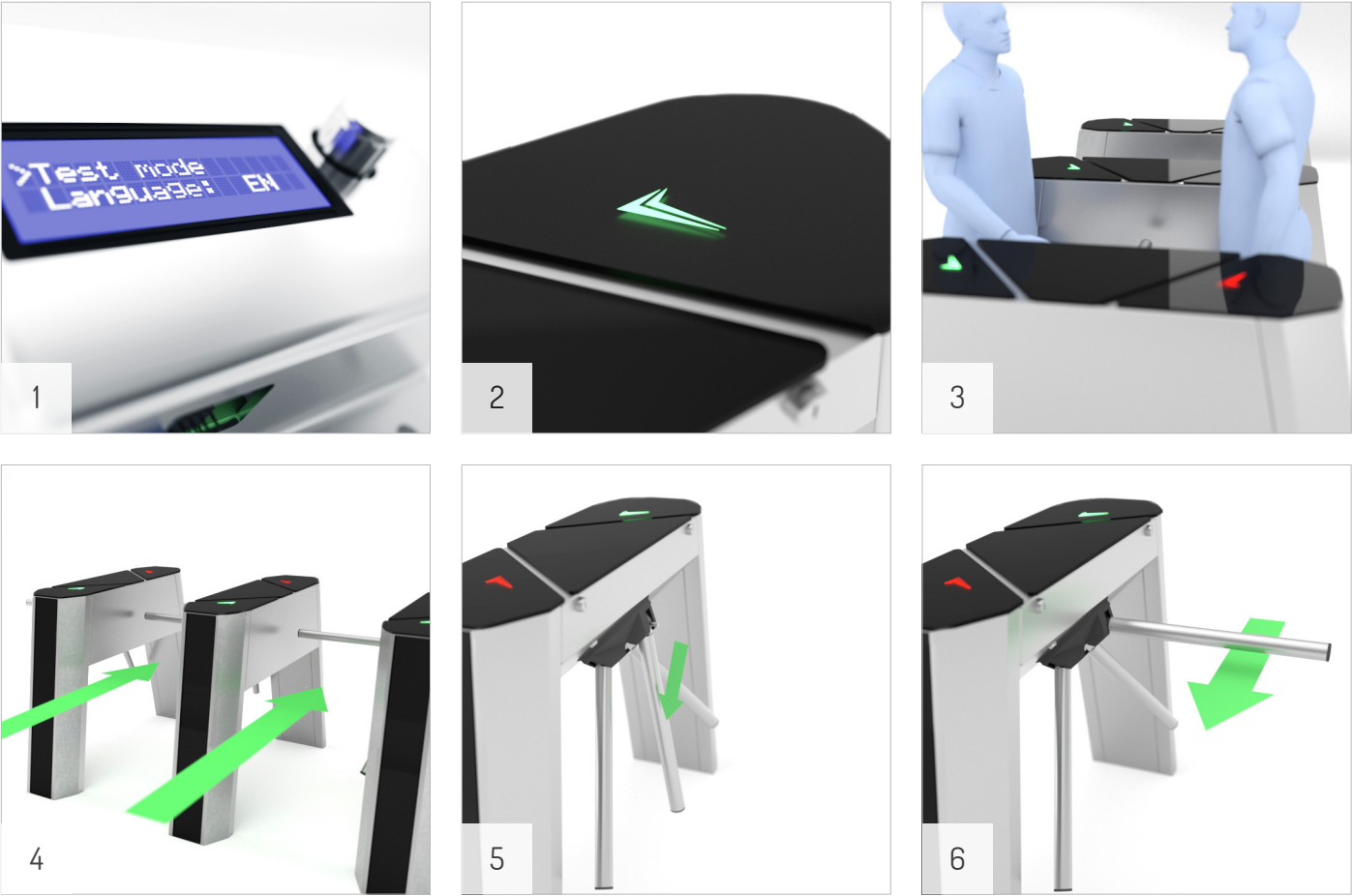
☐ RAL 9003

☒ Standard finish

☐ Non-standard colour/non-standard finishing



FUNCTIONS



1. EASY SETUP

A control panel equipped with a display and a multi-function selector allows easy setup of functions and operating modes.

2. LED PICTOGRAMS

Led pictograms show active/inactive traffic directions in the passage. The red color shows the inactive/blocked traffic direction (the device blocks the passage). The green color shows active/unblocked traffic direction.

3. WORK MODES

The device has a number of operating modes, e.g. uni- or bi- directional traffic control.

4. PRECISIE MEASUREMENT SYSTEM

The device is equipped with an electronic rotor position detection system that allows the control unit to precisely control the locking system as well as smooth motion of the arms (available in the model with an electro-mechanical arm movement booster).

5. ARM-DROP SYSTEM (OPTIONAL)

Automatic arm-drop system in case of a power failure (this function is available in models equipped with the arm-drop module).

6. SUPPORTING ARMS MOTION BOOSTER

The device is equipped with an electromechanical arm rotation booster. It consists of a motor drive, safety clutch and speed transmission. The motion speed can be varied for smooth operation depending on the rotor position.

TECHNICAL SPECIFICATIONS

MECHANISMS

Designed for continuous operation.  
Mechanisms allow 1200 cycles per hour.

MECHANISM [ BR2 ]

Mechanism is equipped with:

- mechanical arm support,
- double arm locking system,
- precise measurement system for arms position,
- mechanical unlocking.

DEVICE SYMBOL - NON DROP ARM VERSION

Model	Cabinet finishing
BR2-F2	INOX/RAL...

DEVICE SYMBOL - DROP ARM VERSION

Model	Cabinet finishing
BR2-F2-DA	INOX/RAL...

Examples:

- BR2-F2 - RAL5010 - F2 turnstile with BR2 mechanism in RAL5010 finish.
- BR2-F2 - INOX - F2 turnstile with a drop arm system and cabinet finished in AISI 304 steel.

ELECTRONIC SYSTEM

- Control input (0V signal) for each traffic direction separately
- Feedback signal output (0V signal) to report a passing individual based on an authorization signal,
- Higher priority inputs to deactivate selected passage sections (e.g. from a building management system),
- Top priority input to clear/open a passage section (e.g. from the firefighting system),
- Functions: remembering steering signals during the working cycle, sound signalling, diode signalling, automatic calibration

SPECIFICATIONS

Power supply voltage:	24 V AC
Peak current:	120 W
Minimum power consumption:	5 A
Control signal:	max. 0.5 sec
Feedback signal:	0V
Operating temperature:	-20° do +50° C
Storage temperature:	-30° do +60° C
Relative humidity:	10-80%
Operating environment:	indoors
IP protection rate:	IP 43
Net weight:	~70kg

OPTIONAL EQUIPMENT\*

Name	Description
Power supply	Power supply 230/24V or 110/24V
Control panel	Control panel for manual traffic control

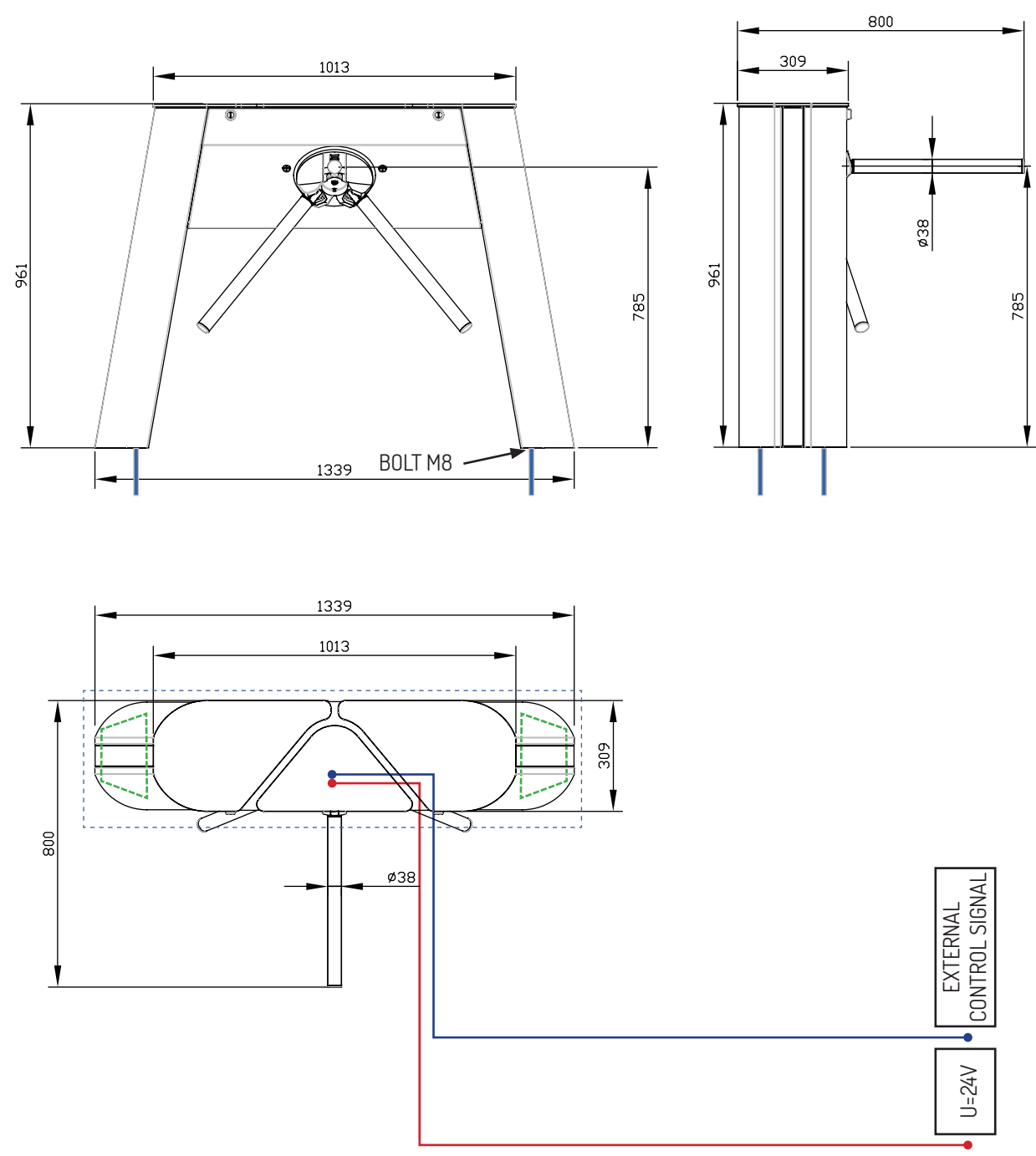
\* Optional equipment not included with the device.



Additional materials and how-to videos available at [www.gastopgroup.com](http://www.gastopgroup.com)

All information given herein is valid at time of publication. GASTOP reserves the right to introduce changes to this offer, concerning both models as well as their construction and equipment. This document does not constitute an offer as understood by law and is published solely for the purpose of information. Optional equipment presented in this brochure may not be available. Product photos and visualizations presented herein may not accurately show technologies in use, properties of materials or colors. Please refer to an authorized distributor or directly to the device manufacturer for detailed information on the above mentioned parameters.

DIMENSIONS



- KEY:
- External control signal - S/UTP cable
  - 24 V supply - 0MY wire 3x1.5mm
  - Wiring-out points
  - Foundation

Notes:



EU: [GASTOPGROUP.COM](http://GASTOPGROUP.COM)  
USA: [GASTOP.US](http://GASTOP.US)

Distributor

MADE IN E.U.