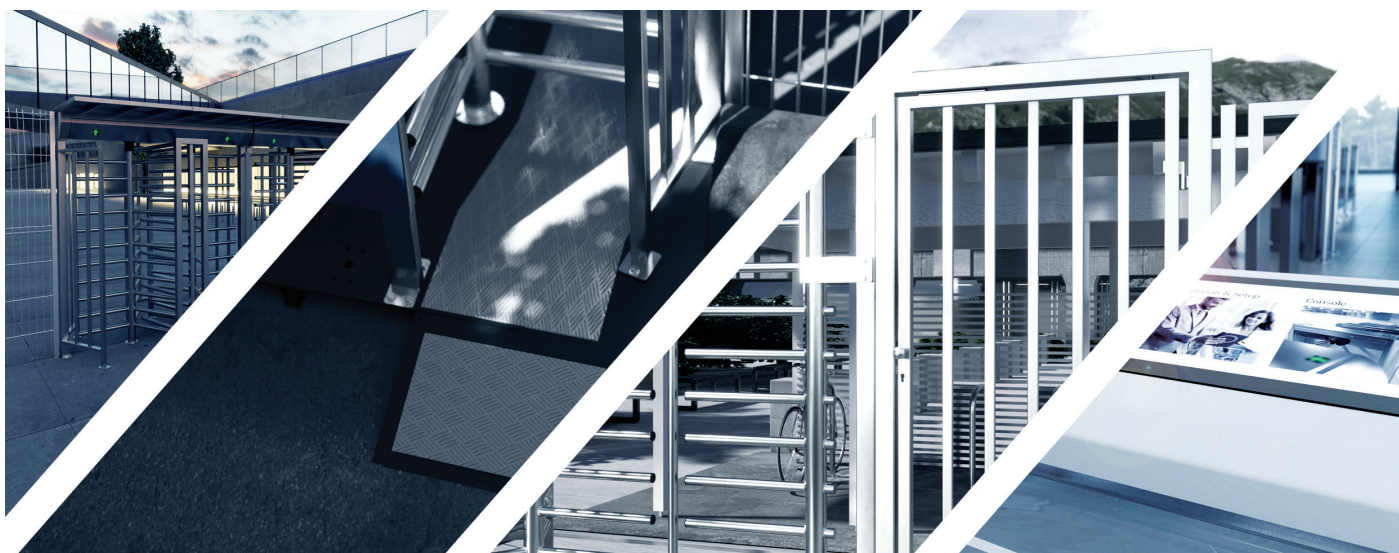


CATALOG

EQUIPMENT

BA3/GA3/MA3

version 2.0



ROOFING6

PLATFORMS8

FENCE, GATEWAY10

CONTROL PANELS.....12

OTHER EQUIPMENT14

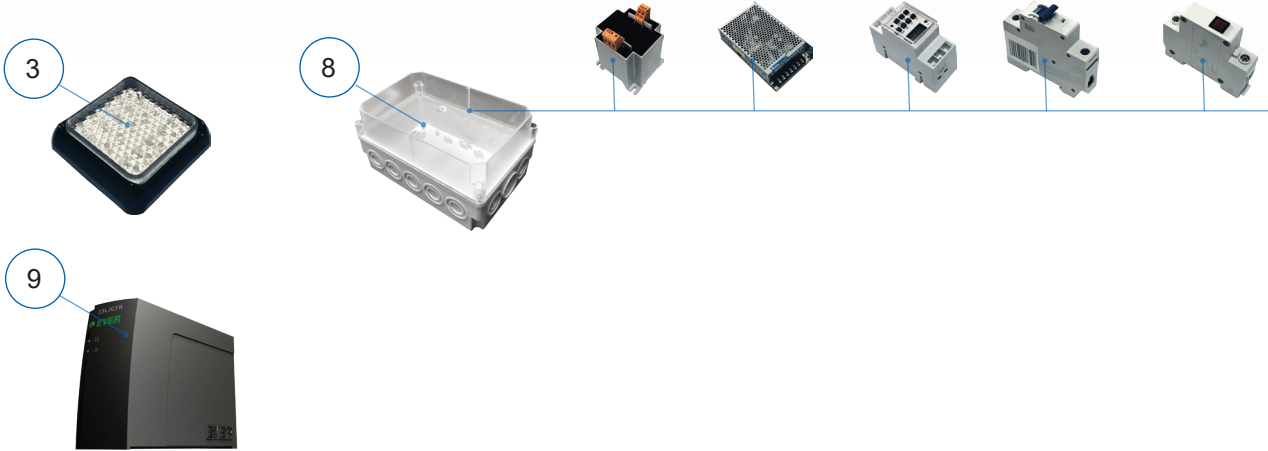


EXAMPLE OF APPLICATION



- 1. Roofing
- 2. Installation of the reader
- 3. Additional lighting
- 4. Platforms
- 5. Gateway
- 6. Post
- 7. Fencing

- 8. Power box with the possibility of placing:
 - transformer ZS-24,
 - power supply,
 - „time setable” lighting module,
 - fuses.
- 9. UPS emergency power supply
- 10. Control panel



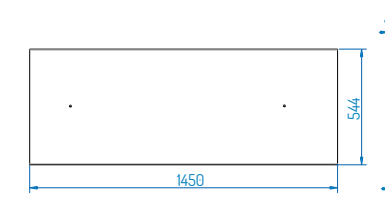
ROOFING

FEATURES

- Protection of the passge from poor weather conditions such as rain or snow,
- D1/D2 roofing attached to the longer sides of gate roof structure,
- DP1/DP2 roofing covering the whole gate structure,
- D1/D2 roofing may be attached diagonally to enable gravitational directioning of rainwater,
- There is an option of attaching a drainpipe (which is not a pat of the quipment) to roofing DP1/DP2,
- Roofing assembly option should be selected when submitting the order (the device requires structural adjustment to roofing during production),
- Main refine material: INOX steel (stainless steel AISI 304),
- There is an option of disassembly for the durstion of transport.

D1

(single full height turnstile roofing)

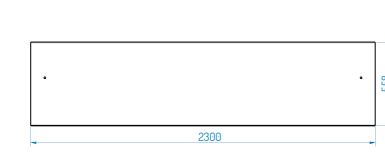
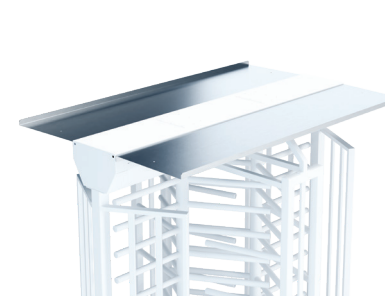


WEIGHT: 20 kg

- Roofing for a single full height turnstile,
- Main finishing material: INOX steel - AISI 304,
- Attached to longer sides of the roof structure
- It is possible to separate for transport.

D2

(double full height turnstile roofing)

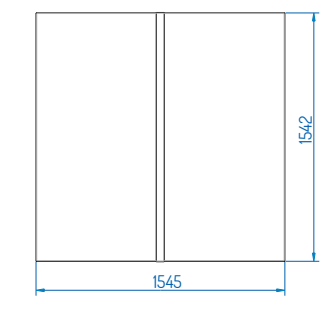


WEIGHT: 30 kg

- Roofing for a double full height turnstile,
- Main finishing material: INOX steel - AISI 304,
- Attached to longer sides of the roof structure
- It is possible to separate for transport.

DP1

(single full height turnstile roofing)

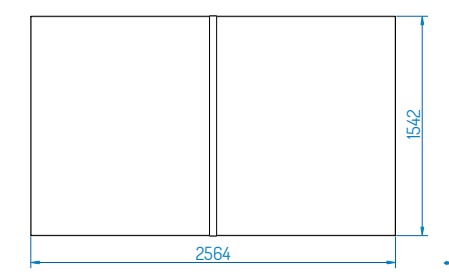


WEIGHT: 70 kg

- Roofing for a single full height turnstile,
- Main finishing material: INOX steel - AISI 304,
- The roof covers the entire turnstile structure,
- It is possible to separate for transport.

DP2

(double full height turnstile roofing)



WEIGHT: 110 kg

- Roofing for a double full height turnstile,
- Main finishing material: INOX steel - AISI 304
- The roof covers the entire turnstile structure,
- It is possible to separate for transport.

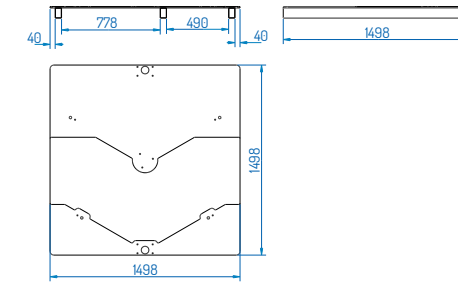
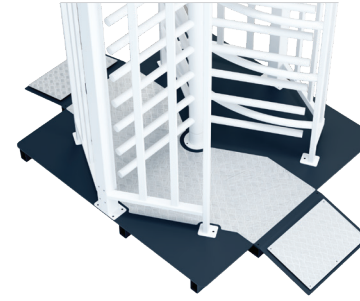
PLATFORMS

FEATURES

- Attaching a platform to the gate enables its mobility (option of relocation),
- Platforms are mounted on profiles (can be transported by a forklift),
- There is an option of deassembly for the duration of the transport.

PS1

(single full height turnstile platform)

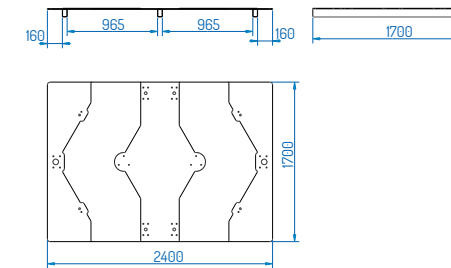
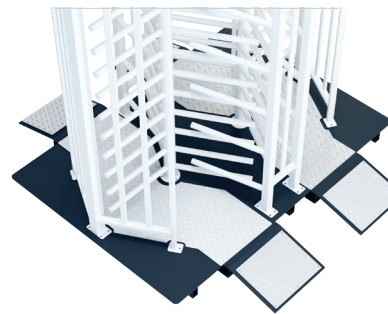


WEIGHT: 140 kg

- Single full height turnstile platform, embedded on profiles,
- Construction: uncoated steel, *
- Passage equipped with grooved, aluminum sheet.

PS2

(double full height turnstile platform)

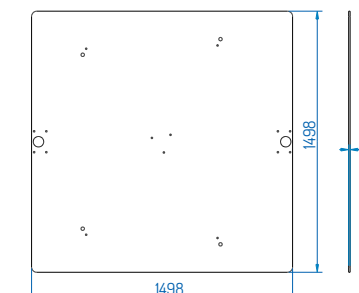


WEIGHT: 200 kg

- Double full height turnstile platform, embedded on profiles,
- Construction: uncoated steel, *
- Passage equipped with grooved, aluminum sheet.

PW1

(single full height turnstile platform)

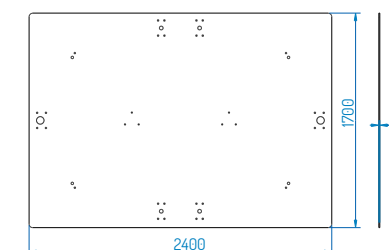
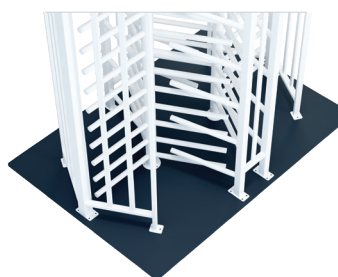


WEIGHT: 110 kg

- Single full height turnstile platform,
- Construction: uncoated steel *

PW2

(double full height turnstile platform)



WEIGHT: 160 kg

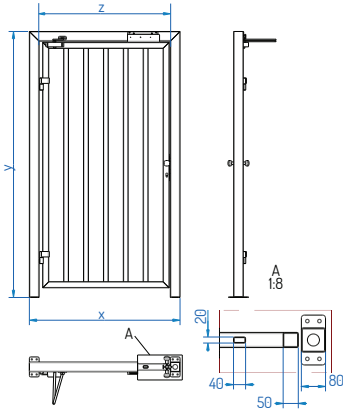
- Single full height turnstile platform,
- Construction: uncoated steel, *

* Uncoated: lacquering / anti-corrosion



FENCE, GATEWAY

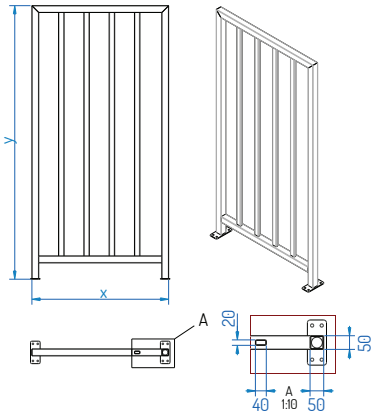
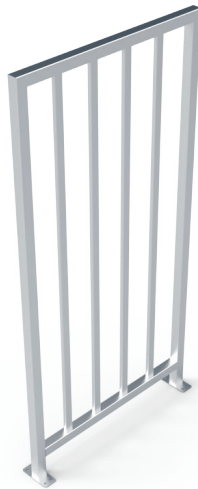
FS-(X-Y)
(gateway)



- Possibility of being equipped with:
 - electromagnetic jumper,
 - closer.
- Available finishes:
 - N - inox,
 - M - powder-coated,
 - O - galvanized.
- Fastened to the substrate with chemical anchors.
- Dimensions to be determined at the ordering stage.

Model	Module width	Module height	Type of finishing
FS	X	Y	N / M / O

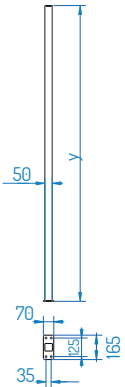
WS-(X-Y)
(fence)



- Available finishes:
 - N - inox,
 - M - powder-coated,
 - O - galvanized.
- Fastened to the substrate with chemical anchors.
- Dimensions to be determined at the ordering stage.

Model	Module width	Module height	Type of finishing
WS	X	Y	N / M / O

SS-(Y)
(post)



- Available finishes:
 - N - inox,
 - M - powder-coated,
 - O - galvanized.
- Fastened to the substrate with chemical anchors.

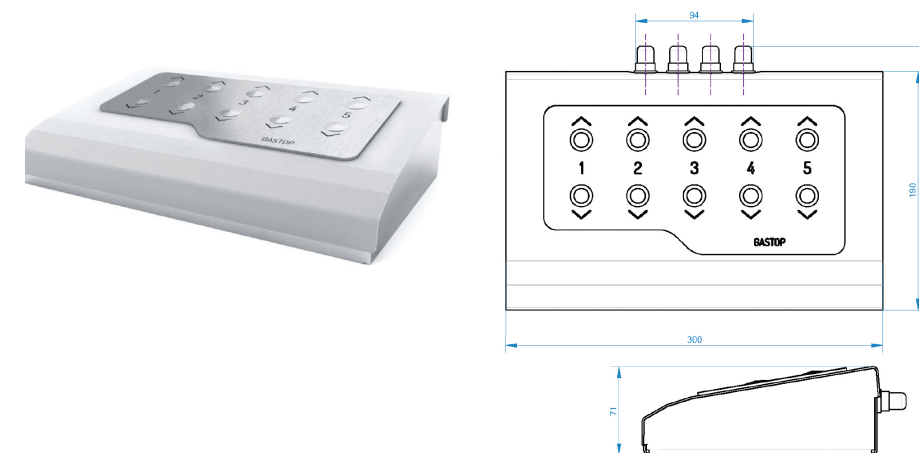
Model	Module height	Type of finishing
SS	Y	N / M / O

CONTROL PANELS

FEATURES

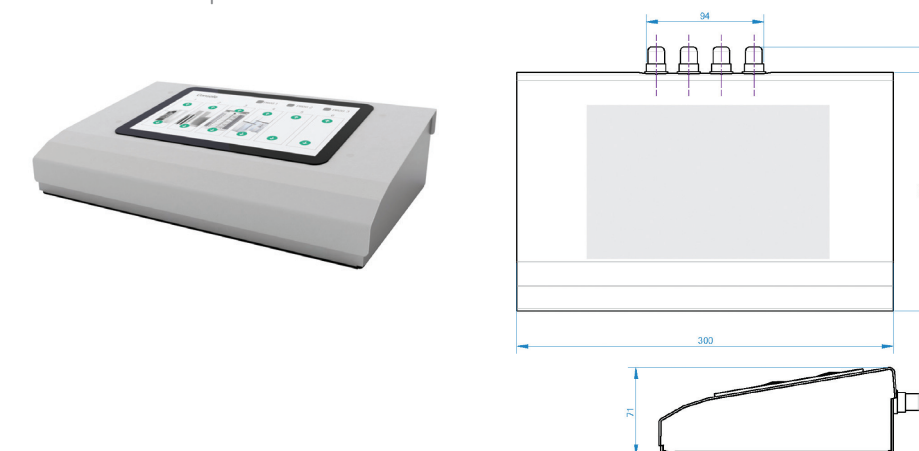
- Industrial durable casing enabling mounting to the ground (top, wall, etc),
- External structure made of stainless steel / anodized aluminium enables
- Control of going into and out of up to 5 devices (rotary or sliding gates),
- There is an option of manufacturing the top acc. to client's individual design taking into account holes for switches and letter engraving.

P1
(mechanical control panel)



- Mechanical buttons
- Enables control of several devices
- The possibility of designing a personalized cover finish
- Durable design

P2
(electronic control panel)

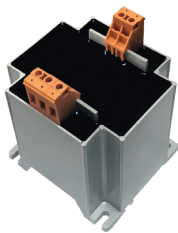


- Touchscreen
- Enables control of several devices
- The possibility of designing a personalized cover finish
- Durable design

OTHER EQUIPMENT ITEMS

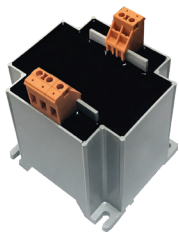
List of additional elements that can be equipped.

Transformer ZS-24, 130VA (BA3)



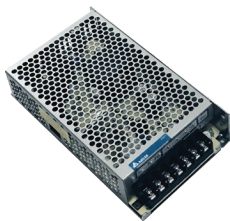
- 130VA
- BA3 series turnstiles

Transformer ZS-24, 90VA (GA3)



- 90VA
- GA3 series turnstiles

Impulse power supply



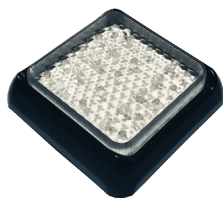
- output voltage: 24 V
- input voltage: 230 V / 110 V
- BA3 / GA3 series turnstiles

Emergency power supply



- protects against voltage drops
- four output sockets

Additional lighting



- LED technology

Lighting module "time setable"



- possibility to specify the time of turning on and off the lighting

Fuse



- installation disconnecter
- protects against damage to the electricity network

Power indicator



- extends the configuration options of the access control system

Power box



- possible types of finishing:
 - PE,
 - powder coated steel
- for 2 or 4 transformers

Transport palette



- standard dimensions:
 - 120 cm x 80 cm,

Installation of the reader



- for any type of readers
- dimensions adapted to a specific type of reader

Reader adapter



- reader installation module
- dimensions adapted to a specific type of reader

Notes:

All information given herein is valid at time of publication. GASTOP reserves the right to introduce changes to this offer, concerning both models as well as their construction and equipment. This document does not constitute an offer as understood by law and is published solely for the purpose of information. Optional equipment presented in this brochure may not be available. Product photos and visualizations presented herein may not accurately show technologies in use, properties of materials or colors. Please refer to an authorized distributor or directly to the device manufacturer for detailed information on the above mentioned parameters.



EU: GASTOPGROUP.COM
USA: GASTOP.US

Distributor:

MADE IN E.U.